

Photo Matt 230

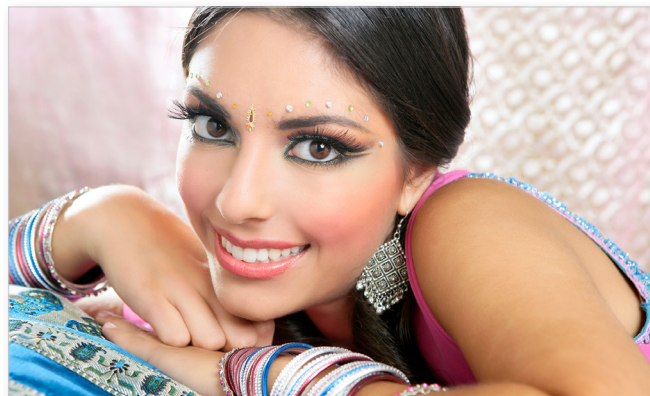



Photo Matt 230
portrait deep matte paper 230 g/m²

© lunamarina - Fotolia.com

 ICC profily a návody: www.fomei.com/profily
/ ICC profiles & guides: www.fomei.com/profiles

Řady inkoustových tiskáren kompatibilní s FOMEI PAPER
/ Inkjet printer series compatible with **FOMEI PAPER**:

Hobby tiskárny / Hobby printers:

Canon PIXMA G, MG, MX, iX, iP, TS
EPSON EcoTank L, Stylus Photo, XP
HP Smart Tank

Profesionální tiskárny / Professional printers:

Canon PIXMA PRO, iPF, iPF PRO
EPSON Stylus PRO (SP), SureColor P (SC-P)
HP DesignJet Z

Hluboce matný portrétní papír s přirozeným podáním černé a vysokou ostroší.

Určení: portrétní a výtvarná fotografie, fotoobrazy bez odlesků

/ Deep matte portrait paper with natural black and high sharpness.

Usage: portrait and art photography, photos without reflections

parametr / parameter	hodnota / value	standard / norm
gramáž / grammage	230 g/m ²	ISO 536
tloušťka / thickness	265 µm	ISO 534
odstín (CIE-L*a*b*) / tint (CIE-L*a*b*)	97.0, 2.2, -6.9	CIE, D50/2°, M0
opacita (neprůhlednost) / opacity	> 95 %	ISO 2469
jádro role / roll core	3" (76,2 mm)	softpress core

Manipulace s papírem

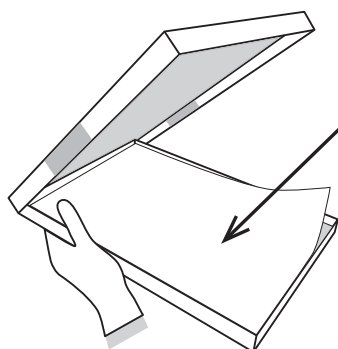
/ Paper handling



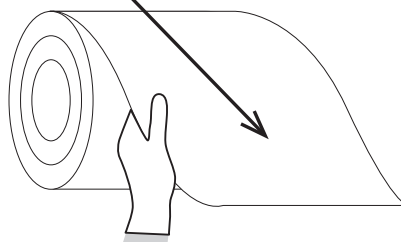
18-25 °C



40-60 %



tisková strana / printing side



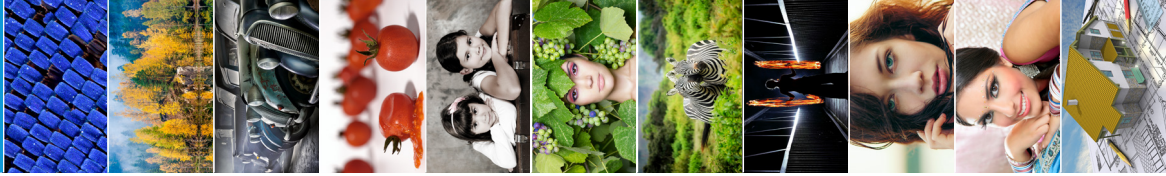
rukavice
/ gloves





FOMEI PHOTO

photo papers for home and professional Canon, EPSON, HP printers



Archival Gloss 265

archival glossy RC paper 265 g/m²

Archival Velvet 265

archival semiglossy RC paper 265 g/m²

Archival Matt 260

archival matte paper 260 g/m²

PRO Gloss 300

premium glossy PE paper 300 g/m²

PRO Pearl 300

premium semiglossy PE paper 300 g/m²

PRO Gloss 265

glossy RC paper 265 g/m²

PRO Pearl 265

semiglossy RC paper 265 g/m²

PRO Gloss 205

glossy RC paper 205 g/m²

PRO Pearl 205

semiglossy RC paper 205 g/m²

Photo Matt 230

portrait deep matte paper 230 g/m²

Premium Matt 180

graphic matte paper 180 g/m²

glossy

semiglossy

matte

glossy

semiglossy

glossy

semiglossy

glossy

semiglossy

glossy

semiglossy

matte

matte

available sheets - format [cm]

	9x13	10x15	13x18	A5	15x23	A4	A3	A3+*	A2	A2+*	30.5	43.2	61.0	65.0	91.4	106.7	111.8	127.0	152.4	
Archival Gloss 265	●	●	●			●	●	●			●	●	●		●		●		●	
Archival Velvet 265	●	●	●			●	●	●	●		●	●	●		●		●		●	
Archival Matt 260						●	●	●	●	●	●	●	●	●	●	●	●	●	●	●
PRO Gloss 300	●	●	●			●	●	●	●	●	●	●	●	●	●	●	●	●	●	●
PRO Pearl 300	●	●	●			●	●	●	●	●	●	●	●	●	●	●	●	●	●	●
PRO Gloss 265	●	●	●	●	●	●	●	●	●	●	●	●	●	●	●	●	●	●	●	●
PRO Pearl 265	●	●	●	●	●	●	●	●	●	●	●	●	●	●	●	●	●	●	●	●
PRO Gloss 205	●	●	●			●	●	●	●	●	●	●	●	●	●	●	●	●	●	●
PRO Pearl 205	●	●	●			●	●	●	●	●	●	●	●	●	●	●	●	●	●	●
Photo Matt 230	●					●	●	●	●	●	●	●	●	●	●	●	●	●	●	●
Premium Matt 180	●					●	●	●	●	●	●	●	●	●	●	●	●	●	●	●

available rolls - width [cm]